



**Marcellus Shale Natural Gas**

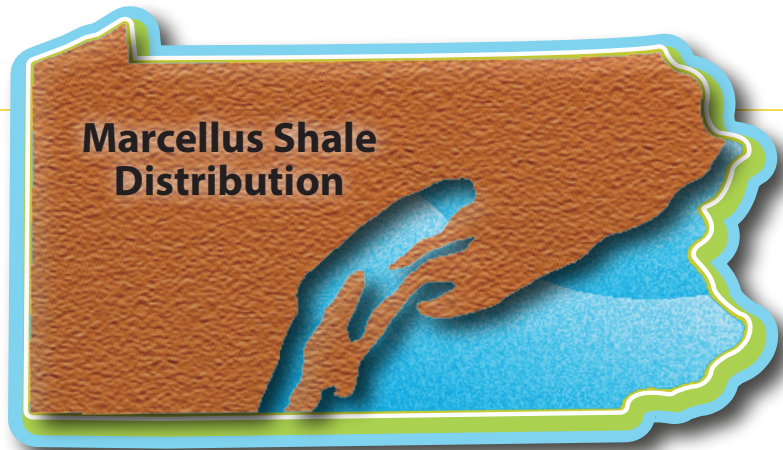
*Marcellus Shale  
Natural Gas*

**STRADLEY  
SPR  
RONON**

## OUR PRACTICE

With years of practical experience in natural and landfill gas projects, Stradley Ronon is uniquely positioned to help our clients participate in the opportunities that gas energy projects provide.

Our focus has been the development of downstream energy projects that consume natural and landfill gas sources to create energy, heat and dramatic overall cost savings by moderating peak load costs. We have worked for many years to develop successful strategies and cost-effective ways to solve the financing, logistical and legal issues that arise in servicing the natural gas and landfill gas industries.



### Marcellus Shale Distribution

A majority of the Marcellus Shale formation's volume underlies Pennsylvania, which is uniquely positioned to recover a majority of its natural gas with reserve estimates approaching 521.4 trillion cubic feet.

Moreover, we are able to integrate the corporate finance, environmental, insurance, government advocacy and tax issues pivotal to natural gas development. Our connections within critical regulatory agencies, well-reputed energy engineers

and ESCOs, as well as mid-Atlantic state administrations and the federal government, afford our clients access and an edge that gives priority and prominence to their energy projects for funding, permitting and development.

# SUCCESS

***We have represented clients in transactions including:***

financing and tax structuring of methane gas pipelines and energy facilities including CHP and co-generation

numerous landfill gas pipeline and power facilities including Combined Heat and Power (CHP) facilities and electrical generating plants, including tax credit and equity analysis

advising industry trade associations on guaranteed energy savings legislation, as well as permit-by-rule and general permitting strategies to streamline approvals for CHP development

working to develop government relations, financing and permitting strategies for gas liquefaction and compression projects to use abundant gas resources for transportation projects using ultra-clean burning fuels

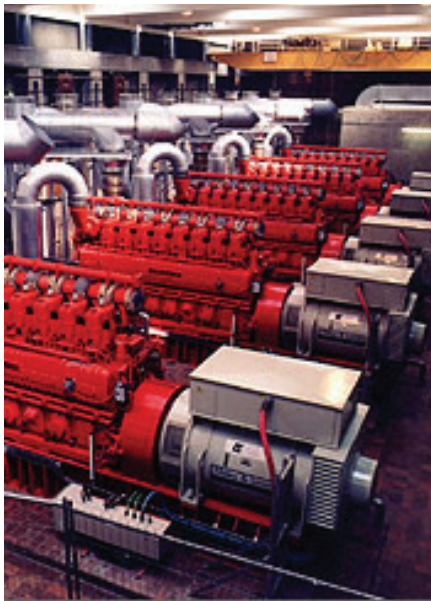
siting and financing CHP projects that employ the most cutting-edge uses of methane gas, driving down energy costs for the institutional client and providing creative financing to the developer

siting and financing oil and gas transshipment facilities

## OUR SERVICES

Our services and strengths lie in:

- working with large institutions to develop cost-saving master energy plans to formulate energy management and utilization strategies
- connecting entrepreneurs with economic and development opportunities related to the shale gas industry



- identifying and facilitating financing for downstream projects and energy companies
- obtaining equity capital, low-interest loans and grants for early-stage companies
- securing environmental permits and land development approvals
- mitigating risk through insurance products for impacts due to project delays and business interruption

## OUR PEOPLE

Stradley Ronon's environmental lawyers and government and public affairs professionals are recognized leaders. They frequently author and lecture on topics affecting the natural gas industry and have received numerous awards and recognitions, including:

- the "Governor of Pennsylvania Award for Environmental Excellence" for various renewable energy projects
- *Best Lawyers in America*



- "Top Attorney" in brownfields law by *South Jersey Magazine*
- "Leader in Environment in New Jersey," *Chambers USA: America's Leading Lawyers for Business*
- "Super Lawyers" in Pennsylvania and New Jersey
- preeminent AV-rating by Martindale-Hubbell
- "Top 50 Influential Democrats in Pennsylvania," *Politics Magazine*
- "People to Watch," *Philadelphia Magazine*

▼  
piping gas to industry sources and developing power facilities at these locations to provide more economic sources of power that also help assist in the goals of energy efficiency and self-sufficiency

▼  
integrating midstream and downstream energy infrastructure to allow our clients to establish competitive and strategic positions in the Marcellus and Utica Shale natural gas plays



For more information on Marcellus Shale Natural Gas and our Renewable Energy & Clean Technology practice, visit [www.stradley.com/marcellusshale](http://www.stradley.com/marcellusshale).



## CONTACTS

**Andrew S. Levine**  
215.564.8073  
[alevine@stradley.com](mailto:alevine@stradley.com)

**Catherine M. Ward**  
856.321.2402  
[cward@stradley.com](mailto:cward@stradley.com)

## ABOUT STRADLEY RONON

For more than 95 years, Stradley Ronon has helped private and public companies – from small businesses to Fortune 500 corporations – achieve their goals. With nine offices and more than 200 attorneys, Stradley Ronon is proud to help companies manage their legal challenges and grow their businesses.

[www.stradley.com](http://www.stradley.com)

## LOCATIONS

Pennsylvania  
Washington, D.C.  
New York  
California  
New Jersey  
Illinois  
Delaware

This communication is provided as a general informational service to clients and friends of Stradley Ronon Stevens & Young, LLP. It should not be construed as, and does not constitute, legal advice on any specific matter, nor does this message create an attorney-client relationship. The enclosed materials may have been abridged from other sources. They are provided for educational and informational purposes for the use of clients and others who may be interested in the subject matter. This material may be considered attorney advertising in some states. Please note that the prior results discussed in the material do not guarantee similar outcomes.

© 2024 Stradley Ronon Stevens & Young, LLP